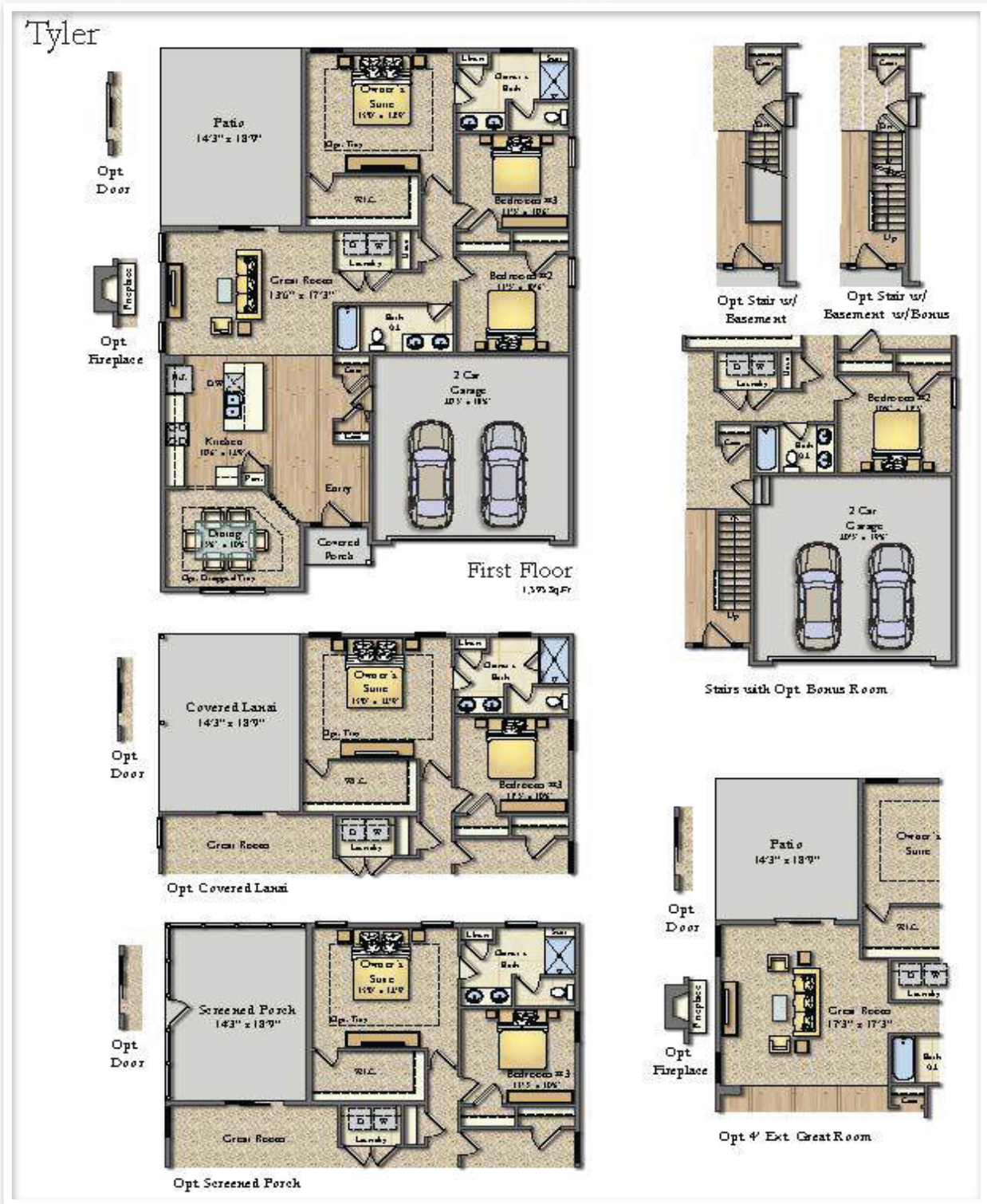
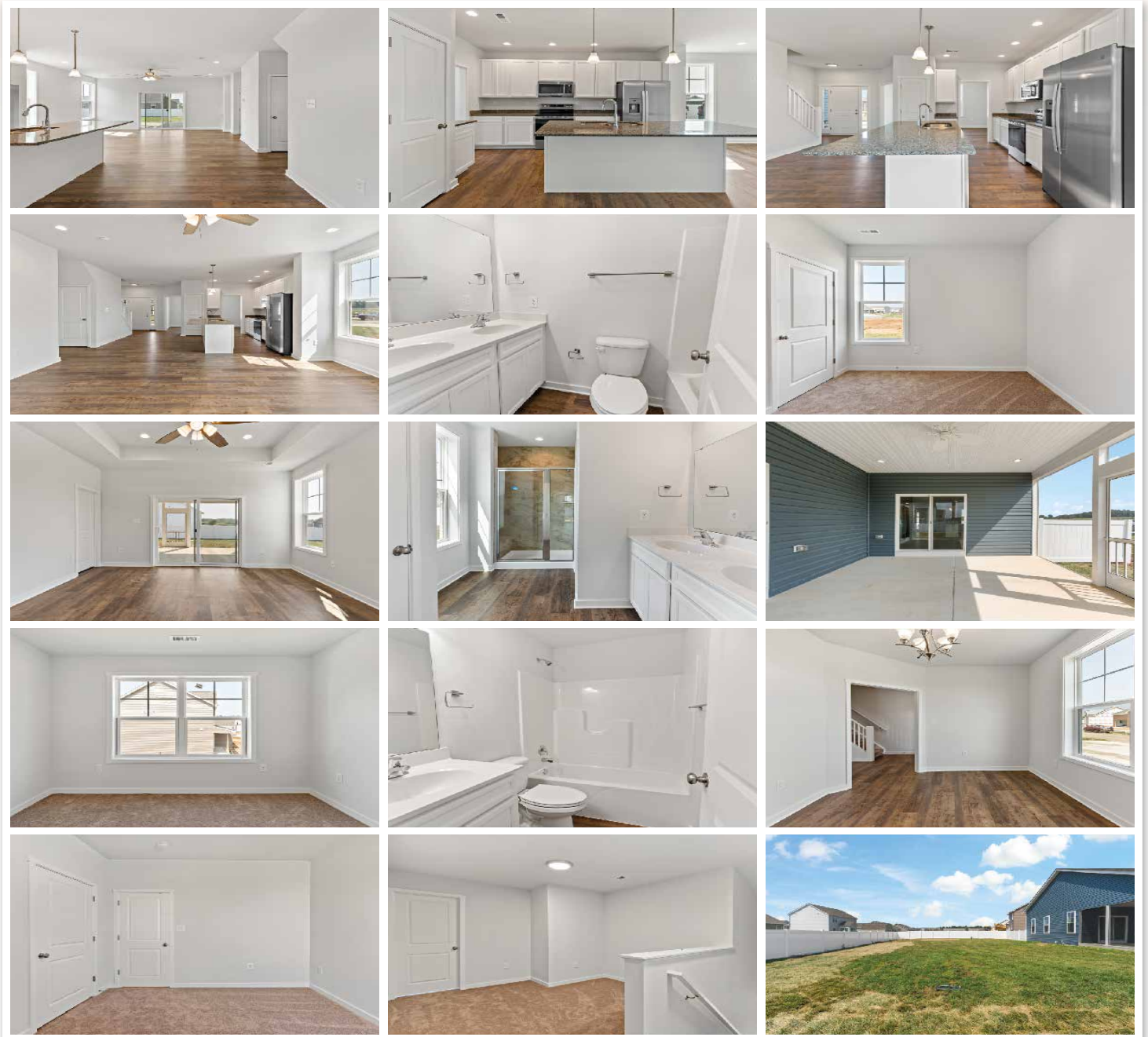


THE TYLER



This 3-bed, 2-bath Ranch boasts 1595 sqft of living space with 9ft ceilings, a formal dining room, a kitchen with granite countertops, and stainless steel appliances. Enjoy the outdoor 19x14 patio and a primary bedroom with tray ceilings, a walk-in closet, and a tile shower.



Contact Us

📞 304-264-6888

🌐 www.fourpointshomeswv.com

✉️ info@fourpointsconstructionwv.com